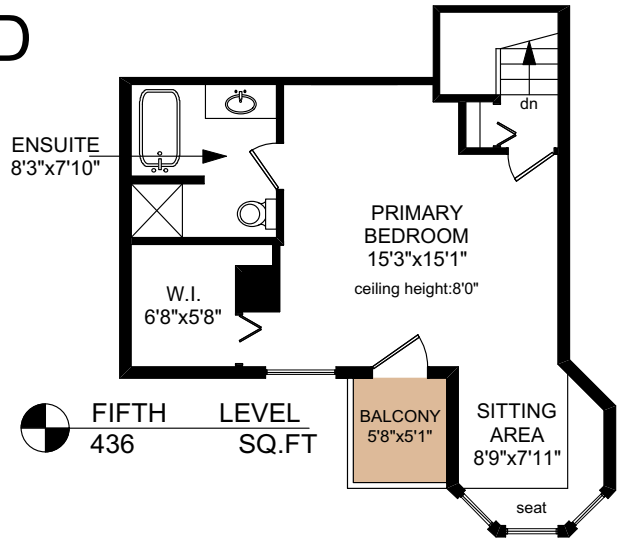
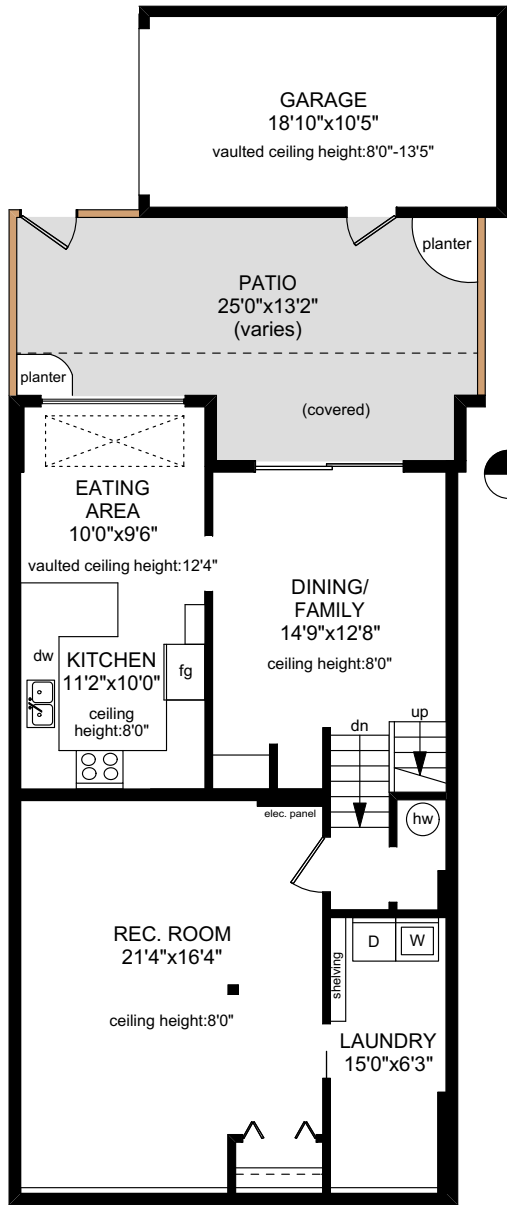
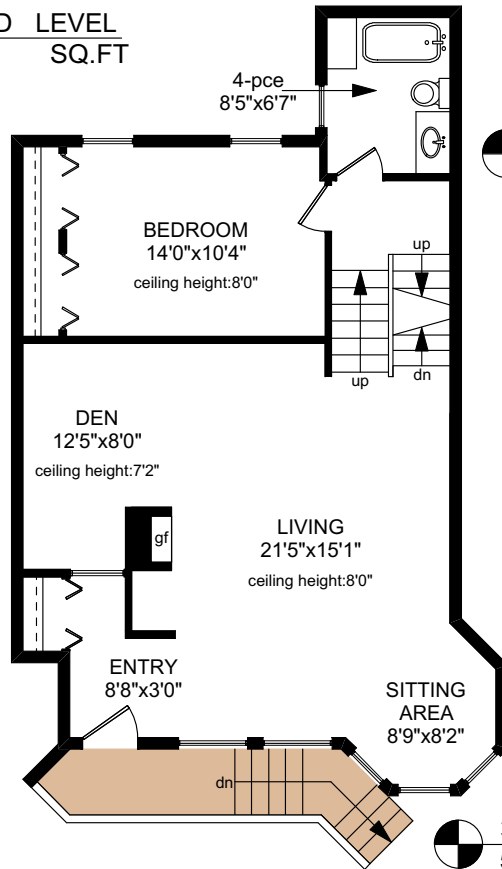


6 - 416 DALLAS ROAD



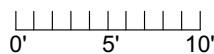
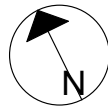
SECOND LEVEL
459 SQ.FT



FOURTH LEVEL
298 SQ.FT

NOTE: The room name labels/sizes are for viewing reference only. They are not to be used for calculating total square footage.

	FINISHED SQ. FT.	UNFINISHED SQ. FT.	TOTAL SQ. FT.
1st	520	0	520
2nd	459	0	459
3rd	548	0	548
4th	298	0	298
5th	436	0	436
TOTAL	2261	0	2261
GARAGE	0	212	212
BALCONY	0	29	29
PATIO	0	271	271



PREPARED FOR THE EXCLUSIVE USE OF
 MARC OWEN-FLOOD,
 PERSONAL REAL ESTATE CORPORATION
 ASSOCIATE BROKER, NEWPORT REALTY Ltd.
 & SYLVIA THERRIEN,
 PERSONAL REAL ESTATE CORPORATION,
 OF NEWPORT REALTY,

MEASURED ON: 02/22/21
 DRAWING FILE: 17857

Tafe Measure VICTORIA, B.C.
 Ph. 883.8894

NOTE: This floor plan is provided by Newport Realty Ltd. as a convenient reference only, and is not to be relied upon as accurate. Prospective Buyers must satisfy themselves not only of the actual measurements, but also to the status of any finished space shown on this floor plan, specifically in relation to minimum ceiling height for habitable rooms required by the BC Building Code, allowable finished floor area in relation to current zoning, and determination if space was developed with necessary municipal permits.