

PROPERTY REPORT

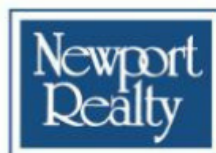
1270 BEACH DR
Oak Bay

Canada

PID: 009-143-475

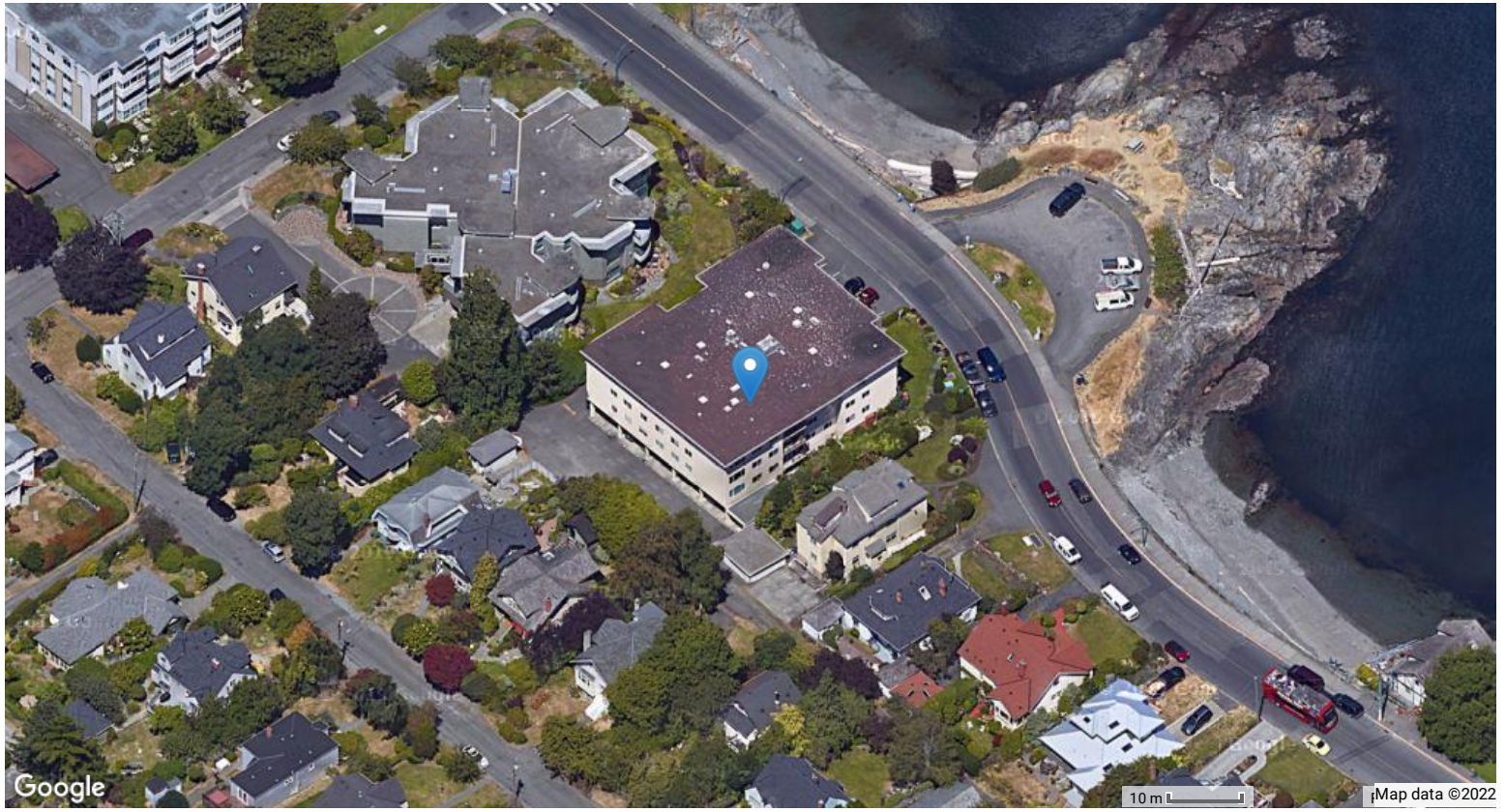
JANUARY 17, 2022

**Marc
Owen-Flood**
Personal Real Estate Corporation



CHRISTIE'S
INTERNATIONAL REAL ESTATE

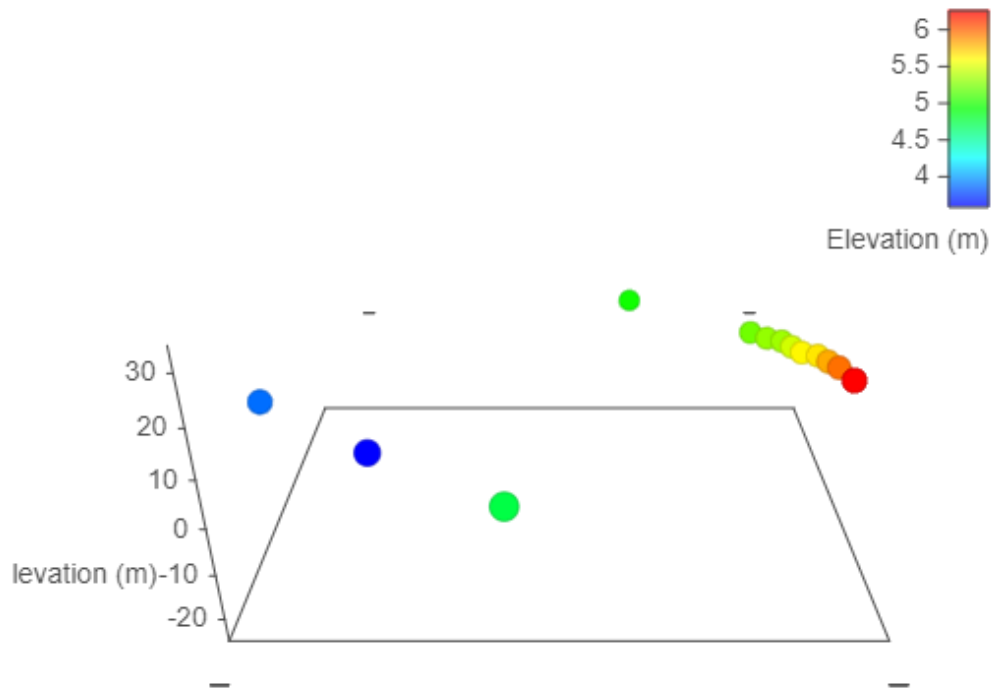
www.owen-flood.com
250-385-2033



Estimated Lot Dimensions and Topography



The lot dimensions shown are estimated and should be verified by survey plan.



Max Elevation: 6.26 m | Min Elevation: 3.58 m | Difference: 2.68 m

Legal



Legend

- Sidewalk
- 30 km/hr
- Municipal Boundary
- Private
- Heritage Register
- Driveway
- 35 km/hr
- Parcel
- Sewer Easement
- Heritage Designation
- Curb Line
- 40 km/hr
- Municipal
- Building Footprint
- 20 km/hr
- 50 km/hr
- Pole Line Easement
- OakBay.DBO.Parks

Infrastructure



Legend

Sidewalk	Driveway	Curb Line	20 km/hr
30 km/hr	35 km/hr	40 km/hr	50 km/hr
Municipal Boundary	Parcel	OakBay.DBO.Parks	Storm Fitting
Storm CatchBasin	Cleanout	Inspection Chamber	Active
Storm Pump	Storm Lateral	Abandoned, <Null>	Abandoned, Main
Active, <Null>	Active, CB Lead	Active, Lead	Active, Main
Active, Service	Active, Stab	Active	Sewer Fitting
Cleanout	Inspection Chamber	Active	Sewer Pump
Sewer Lateral	Sewer TV	Flush Point	Abandoned
Sewer Pressurized Main	Air Release Valve	Active, Opened, Right to Open	Blow Off Valve
Cap	Service Cock	Abandoned, Closed, Right to Open	Active, Opened, Left to Open
Active, Closed, Right to Open	Active, Closed, Left to Open	Water Pump	Municipal
Private	Water Meter	Water Lateral	Active
Abandoned	Water Irrigation		

1270 BEACH DR Oak Bay, British Columbia, Canada



Car-Dependent

Most errands require a car



Some Transit

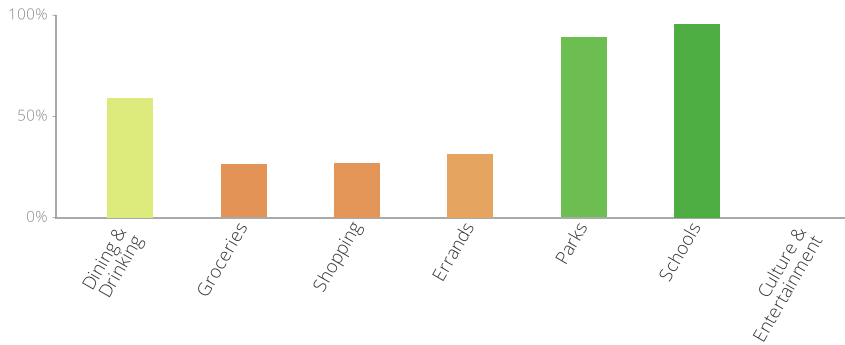
A few nearby public transportation options



Very Bikeable

Biking is convenient for most trips

The Walk Score here is 40 out of 100 based on these categories. [View a map](#) of what's nearby.



Get scores for your address

