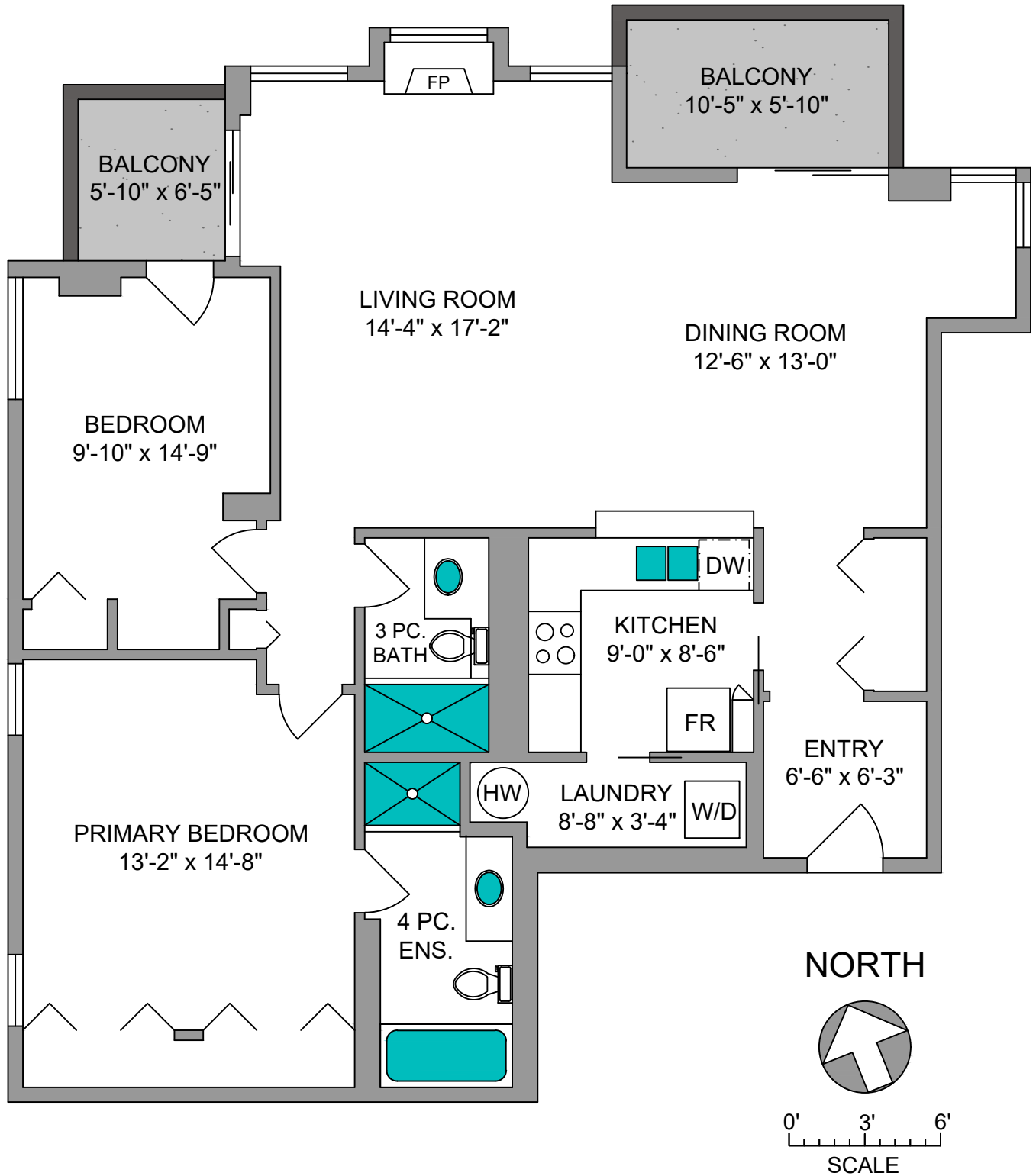


UNIT 450 - 188 DOUGLAS STREET
1259 SQ. FT.
8' CEILING HEIGHT



Marc Owen-Flood
 Personal Real Estate Corporation

Newport Realty

CHRISTIE'S INTERNATIONAL REAL ESTATE

www.owen-flood.com
 250-385-2033

PROPERMEASURE
 FROM PRECISION TO PERFECTION
 propermeasure.com | 250.884.9753
 matt@propermeasure.com

Note: This floor plan is provided by Newport Realty Ltd. as a convenient reference only, and is not to be relied upon as accurate. Prospective Buyers must satisfy themselves not only of the actual measurements, but also to the status of any finished space shown on this floor plan, specifically in relation to minimum ceiling height for habitable rooms required by the BC Building Code, allowable finished floor area in relation to current zoning, and determination if space was developed with necessary municipal permits.

UNIT 450 - 188 DOUGLAS STREET MAY 24, 2022		
PREPARED FOR THE EXCLUSIVE USE OF MARK OWEN-FLOOD PLANS MAY NOT BE 100% ACCURATE, IF CRITICAL BUYER TO VERIFY.		
FLOOR	AREA (SQ. FT.)	
	FINISHED	BALCONY
FOURTH	1259	98