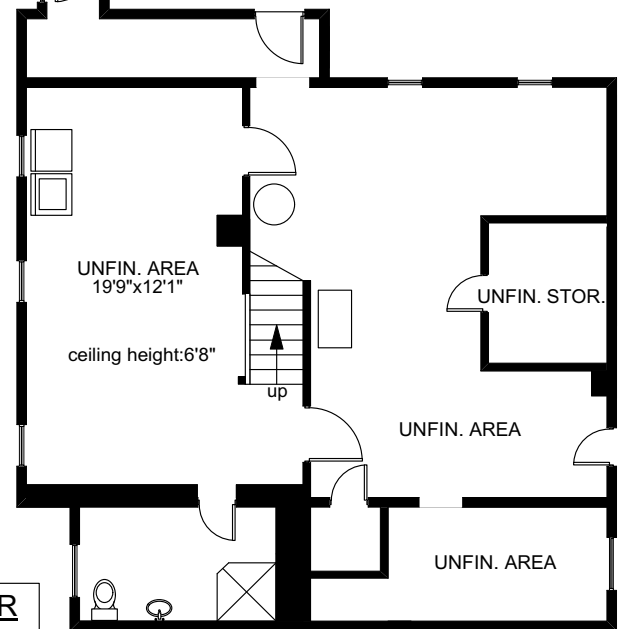
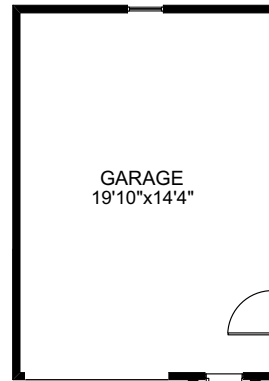
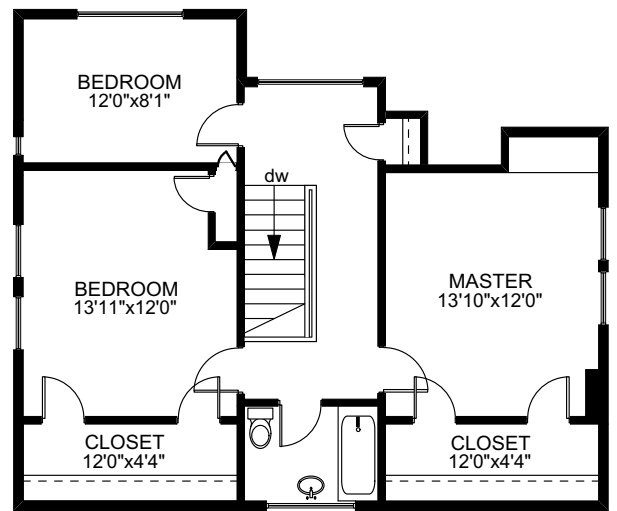
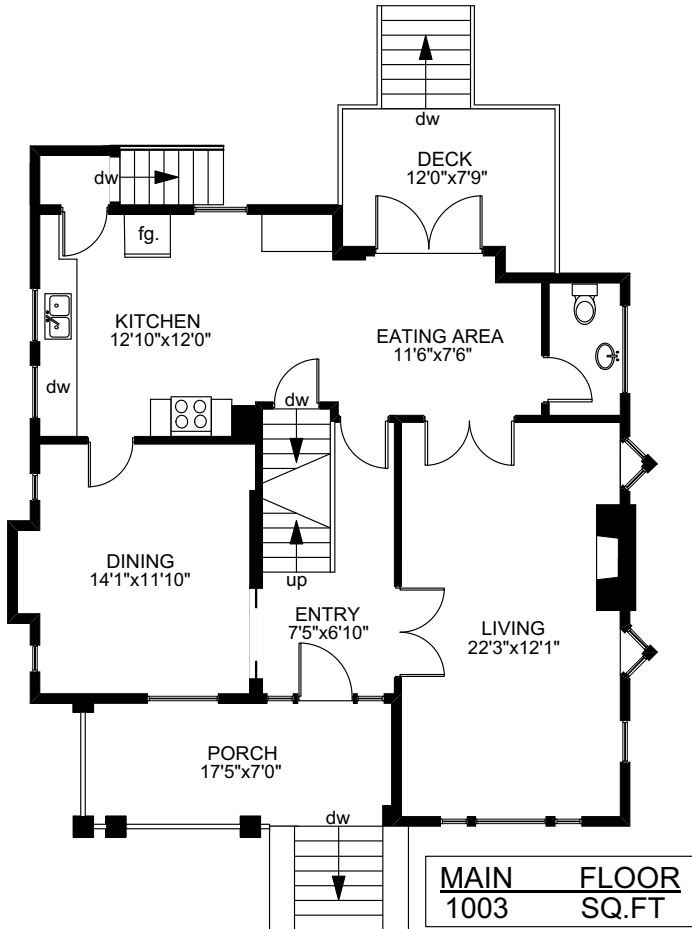
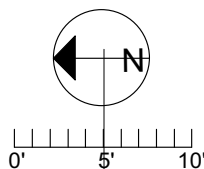


1229 ST. PATRICK STREET



	FINISHED SQ. FT.	UNFINISHED SQ. FT.	TOTAL SQ. FT.
MAIN	1003	0	1003
UPPER	828	0	828
LOWER	0	1114	1114
TOTAL	1831	1114	2945
DECK	0	97	97
PORCH	0	122	122
GARAGE	0	316	316



PREPARED FOR THE EXCLUSIVE USE OF
MARC OWEN-FLOOD,
PERSONAL REAL ESTATE CORPORATION
ASSOCIATE BROKER, NEWPORT REALTY Ltd.

MEASURED ON: 06/01/05
DRAWING FILE: 9353

Tafe Measure VICTORIA, B.C.
Ph. 883.8894
www.tafemeasure.com

NOTE: This floor plan is provided by Newport Realty Ltd. as a convenient reference only, and is not to be relied upon as accurate. Prospective Buyers must satisfy themselves not only of the actual measurements, but also to the status of any finished space shown on this floor plan, specifically in relation to minimum ceiling height for habitable rooms required by the BC Building Code, allowable finished floor area in relation to current zoning, and determination if space was developed with necessary municipal permits.